

Утверждена Приказом Департамента
градостроительства и землепользования
Администрации г.Тобольска
от _____ № _____

Схема расположения границ публичного сервитута

Для размещения и эксплуатации сооружения: ВЛ-0,4кВ ТП-298 ф."Трудовой-1" протяженность 418 м.; ВЛ-0,4кВ ТП-298 ф."Ягодный-1" протяженность 1122 м.; ВЛ-0,4кВ ТП-298 ф."Солнечный" протяженность 525 м.; ВЛ-0,4кВ ТП-298 ф."Садовая-2" протяженность 807м.; ВЛ-0,4кВ от оп.№17 ВЛ-0,4кВ ТП-298, ф."Ягодный-1" протяженность 65 м., расположенное по адресу: Российская Федерация, Тюменская область, город Тобольск, СНТ "Виктория-2"

Площадь границ публичного сервитута – **810 кв.м**, из них :
ЗУ1 (72:24:0608003, 72:24:0607002, 72:24:0608004, 72:24:0608001) - 800 кв.м,
72:24:0608003:333- 5 кв.м
72:24:0608003:343- 3 кв.м
72:24:0608003:356 -2 кв.м

Система координат МСК №2

Обозначение характерных точек границ	Координаты , м (МСК №2)	
	X	Y
1	2	3
1	449009.35	2538464.45
2	449007.97	2538463.00
3	449011.71	2538459.45
4	449013.09	2538460.90
1	449009.35	2538464.45
5	449031.08	2538442.82
6	449033.08	2538442.82
7	449033.08	2538444.82
8	449031.08	2538444.82
5	449031.08	2538442.82
9	449038.46	2538551.68
10	449038.46	2538546.87
11	449040.75	2538546.87
12	449040.75	2538551.68
9	449038.46	2538551.68
13	449046.76	2538589.17
14	449044.76	2538589.17
15	449044.76	2538587.17
16	449046.76	2538587.17
13	449046.76	2538589.17
17	449028.40	2538351.74
18	449030.40	2538351.74
19	449030.40	2538353.74
20	449028.40	2538353.74
17	449028.40	2538351.74
21	449030.58	2538351.03
22	449030.58	2538349.03
23	449032.58	2538349.03
24	449032.58	2538351.03
21	449030.58	2538351.03
25	449052.84	2538323.50
26	449054.84	2538323.50
27	449054.84	2538325.50
28	449052.84	2538325.50
25	449052.84	2538323.50
29	449073.23	2538300.11

30	449075.23	2538300.11
31	449075.23	2538302.11
32	449073.23	2538302.11
29	449073.23	2538300.11
33	449049.50	2538625.80
34	449051.50	2538625.80
35	449051.50	2538627.80
36	449049.50	2538627.80
33	449049.50	2538625.80
37	449052.15	2538626.38
38	449052.15	2538624.38
39	449054.15	2538624.38
40	449054.15	2538626.38
37	449052.15	2538626.38
41	449053.64	2538422.84
42	449055.64	2538422.84
43	449055.64	2538424.84
44	449053.64	2538424.84
41	449053.64	2538422.84
45	449064.15	2538528.50
46	449064.15	2538526.50
47	449066.15	2538526.50
48	449066.15	2538528.50
45	449064.15	2538528.50
49	449066.70	2538526.23
50	449066.70	2538524.85
51	449067.39	2538524.23
52	449068.70	2538524.23
53	449068.70	2538526.23
49	449066.70	2538526.23
54	449074.44	2538659.77
55	449072.44	2538659.77
56	449072.44	2538657.77
57	449074.44	2538657.77
54	449074.44	2538659.77
58	449074.03	2538662.02
59	449074.03	2538660.02
60	449076.03	2538660.02
61	449076.03	2538662.02
58	449074.03	2538662.02
62	449075.16	2538401.61
63	449077.16	2538401.61
64	449077.16	2538403.61
65	449075.16	2538403.61
62	449075.16	2538401.61
66	449080.49	2538610.77
67	449080.49	2538612.77
68	449078.49	2538612.77
69	449078.49	2538610.77
66	449080.49	2538610.77
70	449091.74	2538504.76
71	449093.21	2538504.72
72	449093.21	2538506.72

73	449091.21	2538506.72
74	449091.21	2538505.18
70	449091.74	2538504.76
75	449095.61	2538379.85
76	449096.25	2538379.17
77	449097.18	2538379.93
78	449093.57	2538384.36
79	449092.58	2538383.55
75	449095.61	2538379.85
80	449102.24	2538589.29
81	449102.24	2538591.29
82	449100.24	2538591.29
83	449100.24	2538589.29
80	449102.24	2538589.29
84	449093.70	2538278.64
85	449093.70	2538276.64
86	449095.70	2538276.64
87	449095.70	2538278.64
84	449093.70	2538278.64
88	449114.10	2538255.28
89	449114.10	2538253.28
90	449116.10	2538253.28
91	449116.10	2538255.28
88	449114.10	2538255.28
92	449134.40	2538357.95
93	449129.45	2538360.68
94	449128.49	2538358.93
95	449133.43	2538356.20
92	449134.40	2538357.95
96	449156.28	2538343.19
97	449156.28	2538345.19
98	449154.28	2538345.19
99	449154.28	2538343.19
96	449156.28	2538343.19
100	449119.52	2538482.27
101	449119.42	2538482.14
102	449119.42	2538481.79
103	449121.42	2538481.79
104	449121.42	2538483.79
105	449119.42	2538483.79
106	449119.42	2538482.35
100	449119.52	2538482.27
107	449120.64	2538569.15
108	449122.33	2538569.15
109	449122.33	2538567.42
110	449124.33	2538567.42
111	449124.33	2538569.42
112	449122.64	2538569.42
113	449122.64	2538571.15
114	449120.64	2538571.15
107	449120.64	2538569.15
115	449127.05	2538571.44
116	449125.05	2538571.44
117	449125.05	2538569.44

118	449127.05	2538569.44
115	449127.05	2538571.44
119	449144.28	2538462.41
120	449145.15	2538461.70
121	449146.28	2538461.70
122	449146.28	2538463.70
123	449144.28	2538463.70
119	449144.28	2538462.41
124	449148.45	2538589.19
125	449148.45	2538591.19
126	449146.45	2538591.19
127	449146.45	2538589.19
124	449148.45	2538589.19
128	449150.93	2538593.48
129	449148.93	2538593.48
130	449148.93	2538591.48
131	449150.93	2538591.48
128	449150.93	2538593.48
132	449165.91	2538447.78
133	449163.91	2538447.78
134	449163.92	2538446.39
135	449164.40	2538446.00
136	449164.24	2538445.78
137	449165.91	2538445.78
132	449165.91	2538447.78
138	449189.11	2538427.42
139	449190.12	2538426.60
140	449191.11	2538426.60
141	449191.11	2538428.60
142	449189.11	2538428.60
138	449189.11	2538427.42
143	449134.58	2538229.89
144	449136.58	2538229.89
145	449136.58	2538231.89
146	449134.58	2538231.89
143	449134.58	2538229.89
147	449156.82	2538208.60
148	449154.82	2538208.60
149	449154.82	2538206.60
150	449156.82	2538206.60
147	449156.82	2538208.60
151	449177.27	2538183.13
152	449177.27	2538185.13
153	449175.27	2538185.13
154	449175.27	2538183.13
151	449177.27	2538183.13
155	449269.34	2538247.82
156	449267.34	2538247.82
157	449267.34	2538245.82
158	449269.34	2538245.82
155	449269.34	2538247.82
159	449176.70	2538326.11
160	449176.70	2538324.11

161	449178.70	2538324.11
162	449178.70	2538326.11
159	449176.70	2538326.11
163	449199.23	2538304.67
164	449201.23	2538304.67
165	449201.23	2538306.67
166	449199.23	2538306.67
163	449199.23	2538304.67
167	449222.28	2538284.78
168	449224.28	2538284.78
169	449224.28	2538286.78
170	449222.28	2538286.78
167	449222.28	2538284.78
171	449246.75	2538267.73
172	449244.75	2538267.73
173	449244.75	2538265.73
174	449246.75	2538265.73
171	449246.75	2538267.73
175	449292.07	2538228.59
176	449290.07	2538228.59
177	449290.07	2538226.59
178	449292.07	2538226.59
175	449292.07	2538228.59
179	449313.24	2538210.04
180	449311.24	2538210.04
181	449311.24	2538208.04
182	449313.24	2538208.04
179	449313.24	2538210.04
183	449334.59	2538189.49
184	449334.59	2538191.49
185	449332.59	2538191.49
186	449332.59	2538189.78
187	449332.92	2538189.50
183	449334.59	2538189.49
188	449407.68	2538186.05
189	449407.68	2538188.05
190	449407.11	2538188.03
191	449406.79	2538187.50
192	449405.70	2538186.19
193	449405.68	2538186.05
188	449407.68	2538186.05
194	449370.40	2538157.55
195	449368.98	2538156.14
196	449372.98	2538152.12
197	449374.40	2538153.53
194	449370.40	2538157.55
198	449373.31	2538110.42
199	449373.31	2538108.42
200	449375.31	2538108.42
201	449375.31	2538110.42
198	449373.31	2538110.42
202	449375.32	2538113.34
203	449375.32	2538111.34

204	449377.32	2538111.34
205	449377.32	2538113.34
202	449375.32	2538113.34
206	449381.19	2538154.19
207	449383.19	2538154.19
208	449383.19	2538155.79
209	449381.20	2538154.90
206	449381.19	2538154.19
210	449213.84	2538405.50
211	449213.49	2538405.08
212	449215.19	2538405.08
213	449215.19	2538407.08
214	449213.19	2538407.08
215	449213.20	2538406.11
210	449213.84	2538405.50
216	449236.75	2538385.82
217	449236.75	2538383.82
218	449238.75	2538383.82
219	449238.75	2538385.82
216	449236.75	2538385.82
220	449254.26	2538368.05
221	449254.44	2538368.28
222	449255.56	2538367.31
223	449256.26	2538367.30
224	449256.26	2538369.30
225	449254.26	2538369.30
220	449254.26	2538368.05
226	449271.68	2538352.79
227	449271.68	2538351.99
228	449272.39	2538351.31
229	449271.89	2538350.79
230	449273.68	2538350.79
231	449273.68	2538352.79
226	449271.68	2538352.79
232	449296.27	2538330.10
233	449296.88	2538329.54
234	449297.45	2538329.54
235	449297.45	2538331.54
236	449295.45	2538331.54
237	449295.45	2538329.54
238	449295.78	2538329.54
232	449296.27	2538330.10
239	449318.81	2538312.97
240	449316.81	2538312.97
241	449316.81	2538310.97
242	449318.81	2538310.97
239	449318.81	2538312.97
243	449341.88	2538290.16
244	449343.40	2538290.16
245	449343.40	2538292.16
246	449341.40	2538292.16
247	449341.40	2538290.58
243	449341.88	2538290.16
248	449197.57	2538159.80

249	449197.57	2538161.80
250	449195.57	2538161.80
251	449195.57	2538159.80
248	449197.57	2538159.80
252	449215.95	2538136.50
253	449217.95	2538136.50
254	449217.95	2538138.50
255	449215.95	2538138.50
252	449215.95	2538136.50
256	449236.37	2538115.25
257	449236.37	2538113.25
258	449238.37	2538113.25
259	449238.37	2538115.25
256	449236.37	2538115.25
260	449258.76	2538091.82
261	449256.76	2538091.82
262	449256.76	2538089.82
263	449258.76	2538089.82
260	449258.76	2538091.82
264	449277.14	2538068.60
265	449277.14	2538066.60
266	449279.14	2538066.60
267	449279.14	2538068.60
264	449277.14	2538068.60
268	449297.01	2538048.13
269	449295.01	2538048.13
270	449295.01	2538046.13
271	449297.01	2538046.13
268	449297.01	2538048.13
272	449297.75	2538045.26
273	449297.75	2538043.26
274	449299.75	2538043.26
275	449299.75	2538045.26
272	449297.75	2538045.26
276	449308.71	2538044.67
277	449310.71	2538044.67
278	449310.71	2538046.67
279	449308.71	2538046.67
276	449308.71	2538044.67
280	449310.60	2538047.05
281	449312.60	2538047.05
282	449312.60	2538049.05
283	449310.60	2538049.05
280	449310.60	2538047.05
284	449329.20	2538072.09
285	449331.20	2538072.09
286	449331.20	2538074.09
287	449329.20	2538074.09
284	449329.20	2538072.09
288	449331.75	2538076.82
289	449331.75	2538074.82
290	449333.75	2538074.82
291	449333.75	2538076.82

288	449331.75	2538076.82
292	449357.02	2538084.57
293	449355.02	2538084.57
294	449355.02	2538082.57
295	449357.02	2538082.57
292	449357.02	2538084.57
296	449354.70	2538173.01
297	449352.70	2538173.01
298	449352.70	2538171.01
299	449354.70	2538171.01
296	449354.70	2538173.01
300	449357.42	2538087.67
301	449357.42	2538085.67
302	449359.42	2538085.67
303	449359.42	2538087.67
300	449357.42	2538087.67
304	449368.00	2538127.31
305	449366.83	2538134.83
306	449363.00	2538130.60
304	449368.00	2538127.31
307	449373.73	2538120.79
308	449369.15	2538122.23
309	449368.41	2538121.84
310	449367.50	2538118.84
311	449367.88	2538118.12
312	449372.38	2538116.64
313	449373.12	2538117.02
314	449374.11	2538120.05
307	449373.73	2538120.79
315	449358.26	2538081.90
316	449358.26	2538079.90
317	449360.26	2538079.90
318	449360.26	2538081.90
315	449358.26	2538081.90
319	449383.21	2538061.61
320	449383.21	2538063.61
321	449381.21	2538063.61
322	449381.21	2538061.61
319	449383.21	2538061.61
323	449406.26	2538043.63
324	449406.26	2538041.63
325	449408.26	2538041.63
326	449408.26	2538043.63
323	449406.26	2538043.63
327	449434.37	2538020.53
328	449434.37	2538022.53
329	449432.37	2538022.53
330	449432.37	2538020.53
327	449434.37	2538020.53
331	449389.31	2538121.26
332	449389.31	2538123.26
333	449387.31	2538123.26
334	449387.31	2538121.26

331	449389.31	2538121.26
335	449392.88	2538120.52
336	449390.88	2538120.52
337	449390.88	2538118.52
338	449392.88	2538118.52
335	449392.88	2538120.52
339	449411.56	2538104.44
340	449411.56	2538106.17
341	449411.44	2538106.25
342	449411.57	2538106.42
343	449409.56	2538106.44
344	449409.56	2538104.44
339	449411.56	2538104.44
345	449430.97	2538088.14
346	449432.97	2538088.14
347	449432.97	2538090.14
348	449430.97	2538090.14
345	449430.97	2538088.14
349	449454.66	2538073.90
350	449452.66	2538073.90
351	449452.66	2538071.90
352	449454.66	2538071.90
349	449454.66	2538073.90
353	449474.19	2538055.75
354	449476.19	2538055.75
355	449476.19	2538057.75
356	449474.19	2538057.75
353	449474.19	2538055.75
357	449495.33	2538041.67
358	449495.33	2538039.67
359	449497.33	2538039.67
360	449497.33	2538041.67
357	449495.33	2538041.67
361	449519.74	2538024.74
362	449517.74	2538024.74
363	449517.74	2538022.74
364	449519.74	2538022.74
361	449519.74	2538024.74
365	449581.32	2538122.81
366	449583.32	2538122.81
367	449583.32	2538124.81
368	449581.32	2538124.81
365	449581.32	2538122.81
369	449606.20	2538108.10
370	449606.20	2538106.10
371	449608.20	2538106.10
372	449608.20	2538107.22
373	449606.93	2538108.09
369	449606.20	2538108.10
374	449419.93	2537946.42
375	449419.93	2537944.42
376	449421.93	2537944.42
377	449421.93	2537946.42

374	449419.93	2537946.42
378	449421.87	2537949.47
379	449421.87	2537947.47
380	449423.87	2537947.47
381	449423.87	2537949.47
378	449421.87	2537949.47
382	449424.48	2537942.35
383	449424.48	2537944.35
384	449422.48	2537944.35
385	449422.48	2537942.35
382	449424.48	2537942.35
386	449445.43	2537928.84
387	449443.43	2537928.84
388	449443.43	2537926.84
389	449445.43	2537926.84
386	449445.43	2537928.84
390	449448.18	2537990.91
391	449450.18	2537990.91
392	449450.18	2537992.91
393	449448.18	2537992.91
390	449448.18	2537990.91
394	449450.09	2537994.35
395	449452.09	2537994.35
396	449452.09	2537996.35
397	449450.09	2537996.35
394	449450.09	2537994.35
398	449457.44	2538000.39
399	449459.44	2538000.39
400	449459.44	2538002.39
401	449457.44	2538002.39
398	449457.44	2538000.39
402	449463.92	2537911.85
403	449465.92	2537911.85
404	449465.92	2537913.85
405	449463.92	2537913.85
402	449463.92	2537911.85
406	449468.54	2537911.83
407	449466.54	2537911.83
408	449466.54	2537909.83
409	449468.54	2537909.83
406	449468.54	2537911.83
410	449484.95	2537980.02
411	449486.95	2537980.02
412	449486.95	2537982.02
413	449484.95	2537982.02
410	449484.95	2537980.02
414	449494.04	2537900.89
415	449492.33	2537900.89
416	449492.33	2537898.89
417	449494.33	2537898.89
418	449494.32	2537900.36
419	449493.91	2537900.61
414	449494.04	2537900.89

420	449513.39	2537961.31
421	449513.39	2537963.31
422	449511.39	2537963.31
423	449511.39	2537961.31
420	449513.39	2537961.31
424	449538.35	2537941.94
425	449540.35	2537941.94
426	449540.35	2537943.94
427	449538.35	2537943.94
424	449538.35	2537941.94
428	449554.71	2537977.78
429	449554.71	2537979.78
430	449552.71	2537979.78
431	449552.71	2537977.78
428	449554.71	2537977.78
432	449564.99	2537925.26
433	449564.99	2537923.26
434	449566.99	2537923.26
435	449566.99	2537925.26
432	449564.99	2537925.26
436	449576.80	2537963.59
437	449578.80	2537963.59
438	449578.80	2537965.59
439	449576.80	2537965.59
436	449576.80	2537963.59
440	449535.15	2538000.62
441	449537.15	2538000.62
442	449537.15	2538002.62
443	449535.15	2538002.62
440	449535.15	2538000.62
444	449633.24	2538045.44
445	449635.14	2538045.43
446	449635.10	2538047.43
447	449633.24	2538047.44
444	449633.24	2538045.44
448	449649.07	2538069.38
449	449647.07	2538069.38
450	449647.07	2538067.38
451	449649.07	2538067.38
448	449649.07	2538069.38
452	449656.66	2538070.60
453	449656.65	2538071.92
454	449656.33	2538072.15
455	449655.68	2538072.59
456	449654.66	2538072.60
457	449654.66	2538070.60
452	449656.66	2538070.60
458	449632.44	2538087.92
459	449632.44	2538089.92
460	449632.24	2538089.90
461	449631.86	2538089.23
462	449631.00	2538089.90
463	449630.44	2538089.92

464	449630.44	2538087.92
458	449632.44	2538087.92
465	449739.65	2538158.57
466	449737.65	2538158.57
467	449737.65	2538156.57
468	449739.65	2538156.57
465	449739.65	2538158.57
469	449746.34	2538085.02
470	449745.68	2538085.49
471	449746.33	2538086.52
472	449746.34	2538086.93
473	449744.34	2538086.93
474	449744.34	2538084.93
469	449746.34	2538085.02
475	449681.10	2538051.95
476	449683.10	2538051.95
477	449683.10	2538053.95
478	449681.10	2538053.95
475	449681.10	2538051.95
479	449709.46	2538033.09
480	449709.46	2538035.09
481	449707.46	2538035.09
482	449707.46	2538033.09
479	449709.46	2538033.09
483	449723.92	2538049.98
484	449721.92	2538049.98
485	449721.92	2538047.98
486	449723.92	2538047.98
483	449723.92	2538049.98
487	449738.12	2538015.38
488	449736.12	2538015.38
489	449736.12	2538013.38
490	449738.12	2538013.38
487	449738.12	2538015.38
491	449763.44	2537998.34
492	449763.44	2538000.34
493	449761.44	2538000.34
494	449761.44	2537998.34
491	449763.44	2537998.34
495	449786.82	2537985.65
496	449786.15	2537985.65
497	449786.15	2537983.65
498	449788.15	2537983.65
499	449788.15	2537984.88
495	449786.82	2537985.65
500	449812.72	2537969.48
501	449812.72	2537971.48
502	449810.72	2537971.48
503	449810.72	2537969.48
500	449812.72	2537969.48
504	449831.45	2537958.00
505	449833.45	2537958.00
506	449833.45	2537960.00

507	449831.45	2537960.00
504	449831.45	2537958.00
508	449410.70	2538231.56
509	449412.70	2538231.56
510	449412.70	2538233.56
511	449410.70	2538233.56
508	449410.70	2538231.56
512	449414.04	2538178.38
513	449414.04	2538180.38
514	449412.04	2538180.38
515	449412.04	2538178.38
512	449414.04	2538178.38
516	449415.54	2538176.44
517	449416.45	2538176.44
518	449416.45	2538178.44
519	449414.45	2538178.44
520	449414.45	2538177.29
516	449415.54	2538176.44
521	449430.20	2538221.27
522	449430.20	2538219.27
523	449432.20	2538219.27
524	449432.20	2538221.27
521	449430.20	2538221.27
525	449390.01	2538250.53
526	449390.01	2538249.79
527	449391.66	2538248.53
528	449392.01	2538248.53
529	449392.01	2538250.53
525	449390.01	2538250.53
530	449470.12	2538264.73
531	449470.12	2538262.73
532	449472.12	2538262.73
533	449472.12	2538264.73
530	449470.12	2538264.73
534	449487.32	2538284.92
535	449489.32	2538284.92
536	449489.32	2538286.92
537	449487.44	2538286.92
538	449487.32	2538286.78
534	449487.32	2538284.92
539	449431.37	2538214.42
540	449433.37	2538214.42
541	449433.37	2538216.42
542	449431.37	2538216.42
539	449431.37	2538214.42
543	449433.60	2538216.98
544	449435.60	2538216.98
545	449435.60	2538218.98
546	449433.60	2538218.98
543	449433.60	2538216.98
547	449448.04	2538222.63
548	449446.30	2538222.64
549	449446.30	2538220.64

550	449448.30	2538220.64
551	449448.29	2538222.05
547	449448.04	2538222.63
552	449451.60	2538219.47
553	449450.40	2538220.42
554	449449.62	2538220.42
555	449449.62	2538218.42
556	449451.62	2538218.42
552	449451.60	2538219.47
557	449451.45	2538241.30
558	449451.45	2538239.30
559	449453.45	2538239.30
560	449453.45	2538241.30
557	449451.45	2538241.30
561	449471.46	2538201.72
562	449473.46	2538201.72
563	449473.46	2538202.57
564	449472.94	2538202.93
565	449471.93	2538203.72
566	449471.46	2538203.72
561	449471.46	2538201.72
567	449493.29	2538187.56
568	449493.29	2538188.52
569	449491.82	2538189.55
570	449491.29	2538189.56
571	449491.29	2538187.56
567	449493.29	2538187.56
572	449513.03	2538174.53
573	449511.78	2538175.40
574	449511.29	2538175.42
575	449511.29	2538173.42
576	449513.29	2538173.42
577	449513.29	2538174.92
572	449513.03	2538174.53
578	449445.46	2538153.54
579	449447.46	2538153.54
580	449447.46	2538155.54
581	449445.46	2538155.54
578	449445.46	2538153.54
582	449449.96	2538151.73
583	449449.96	2538153.73
584	449447.96	2538153.73
585	449447.96	2538151.73
582	449449.96	2538151.73
586	449531.38	2538159.26
587	449533.38	2538159.26
588	449533.38	2538159.87
589	449533.28	2538159.94
590	449533.37	2538160.07
591	449533.38	2538161.26
592	449531.38	2538161.26
586	449531.38	2538159.26
593	449557.78	2538141.71
594	449557.78	2538139.71

595	449559.78	2538139.71
596	449559.78	2538141.71
593	449557.78	2538141.71
597	449502.93	2538303.93
598	449504.93	2538303.93
599	449504.93	2538305.93
600	449502.93	2538305.93
597	449502.93	2538303.93
601	449506.41	2538306.29
602	449506.41	2538308.29
603	449504.41	2538308.29
604	449504.41	2538306.29
601	449506.41	2538306.29
605	449507.31	2538306.70
606	449507.31	2538304.70
607	449509.31	2538304.70
608	449509.31	2538306.70
605	449507.31	2538306.70
609	449530.75	2538291.36
610	449532.75	2538291.36
611	449532.75	2538293.36
612	449530.75	2538293.36
609	449530.75	2538291.36
613	449558.78	2538276.85
614	449558.78	2538278.85
615	449556.78	2538278.85
616	449556.78	2538276.85
613	449558.78	2538276.85
617	449584.72	2538262.42
618	449584.72	2538264.42
619	449582.72	2538264.42
620	449582.72	2538262.42
617	449584.72	2538262.42
621	449607.64	2538246.04
622	449609.64	2538246.04
623	449609.64	2538248.04
624	449607.64	2538248.04
621	449607.64	2538246.04
625	449517.57	2538174.06
626	449519.57	2538174.06
627	449519.57	2538176.06
628	449517.57	2538176.06
625	449517.57	2538174.06
629	449531.97	2538197.12
630	449529.97	2538197.12
631	449529.97	2538195.12
632	449531.97	2538195.12
629	449531.97	2538197.12
633	449632.72	2538229.26
634	449634.72	2538229.26
635	449634.72	2538231.26
636	449632.72	2538231.26
633	449632.72	2538229.26

637	449657.72	2538214.76
638	449657.72	2538212.76
639	449659.72	2538212.76
640	449659.72	2538214.76
637	449657.72	2538214.76
641	449680.09	2538198.25
642	449682.09	2538198.25
643	449682.09	2538200.25
644	449680.09	2538200.25
641	449680.09	2538198.25
645	449682.78	2538196.23
646	449684.78	2538196.23
647	449684.78	2538198.23
648	449682.78	2538198.23
645	449682.78	2538196.23
649	449710.22	2538178.53
650	449710.22	2538176.53
651	449712.22	2538176.53
652	449712.22	2538178.53
649	449710.22	2538178.53
653	449601.76	2537948.63
654	449603.76	2537948.63
655	449603.76	2537950.63
656	449601.76	2537950.63
653	449601.76	2537948.63
657	449625.89	2537933.79
658	449627.89	2537933.79
659	449627.89	2537935.79
660	449625.89	2537935.79
657	449625.89	2537933.79
661	449650.34	2537921.02
662	449650.34	2537919.02
663	449652.34	2537919.02
664	449652.34	2537921.02
661	449650.34	2537921.02
665	449677.50	2537904.08
666	449677.50	2537906.08
667	449675.50	2537906.08
668	449675.50	2537904.08
665	449677.50	2537904.08
669	449602.83	2537897.77
670	449602.83	2537899.77
671	449600.83	2537899.77
672	449600.83	2537897.77
669	449602.83	2537897.77
673	449628.42	2537880.22
674	449628.42	2537878.22
675	449630.42	2537878.22
676	449630.42	2537880.22
673	449628.42	2537880.22
677	449658.00	2537859.07
678	449658.00	2537857.07

679	449660.00	2537857.07
680	449660.00	2537859.07
677	449658.00	2537859.07
681	449688.22	2537839.13
682	449686.22	2537839.13
683	449686.22	2537837.13
684	449688.22	2537837.13
681	449688.22	2537839.13
685	449701.23	2537889.63
686	449701.23	2537891.63
687	449699.23	2537891.63
688	449699.23	2537889.63
685	449701.23	2537889.63
689	449717.36	2537817.56
690	449717.36	2537819.56
691	449715.36	2537819.56
692	449715.36	2537817.56
689	449717.36	2537817.56
693	449719.11	2537820.33
694	449719.11	2537822.33
695	449717.11	2537822.33
696	449717.11	2537820.33
693	449719.11	2537820.33
697	449724.24	2537879.58
698	449726.24	2537879.58
699	449726.24	2537881.58
700	449724.24	2537881.58
697	449724.24	2537879.58
701	449729.24	2537878.23
702	449729.24	2537880.23
703	449727.24	2537880.23
704	449727.24	2537878.23
701	449729.24	2537878.23
705	449747.38	2537801.65
706	449745.38	2537801.65
707	449745.38	2537799.65
708	449747.38	2537799.65
705	449747.38	2537801.65
709	449777.82	2537782.44
710	449777.82	2537784.44
711	449775.82	2537784.44
712	449775.82	2537782.44
709	449777.82	2537782.44
713	449806.66	2537765.24
714	449808.66	2537765.24
715	449808.66	2537767.24
716	449806.66	2537767.24
713	449806.66	2537765.24
717	449753.51	2538028.57
718	449753.50	2538028.74
719	449753.00	2538029.03
720	449753.50	2538029.87
721	449753.51	2538030.57

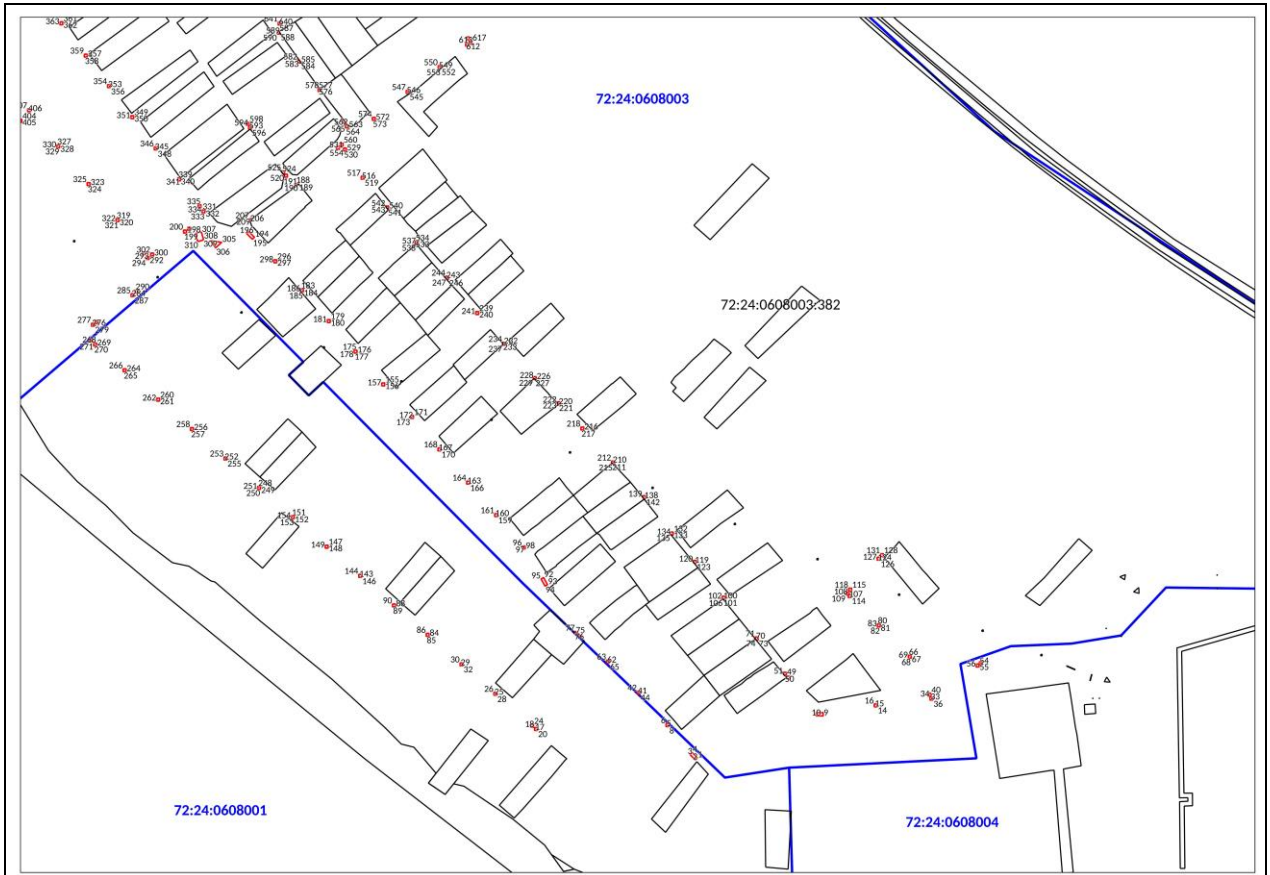
722	449751.51	2538030.57
723	449751.51	2538028.57
717	449753.51	2538028.57
724	449774.45	2538062.30
725	449774.45	2538064.30
726	449772.45	2538064.30
727	449772.45	2538062.30
724	449774.45	2538062.30
728	449868.97	2538014.55
729	449868.96	2538014.03
730	449868.65	2538014.02
731	449868.47	2538013.72
732	449868.47	2538012.03
733	449870.47	2538012.03
734	449870.47	2538012.82
735	449870.96	2538012.82
736	449870.96	2538014.82
737	449869.13	2538014.82
728	449868.97	2538014.55
738	449836.44	2537956.21
739	449836.44	2537958.21
740	449834.44	2537958.21
741	449834.44	2537956.21
738	449836.44	2537956.21
742	449852.41	2537982.27
743	449850.41	2537982.27
744	449850.41	2537980.27
745	449852.41	2537980.27
742	449852.41	2537982.27
746	449861.68	2537996.66
747	449861.68	2537998.66
748	449859.68	2537998.66
749	449859.68	2537996.66
746	449861.68	2537996.66
750	449836.89	2537750.29
751	449836.89	2537748.29
752	449838.89	2537748.29
753	449838.89	2537750.29
750	449836.89	2537750.29
754	449865.84	2537735.21
755	449863.84	2537735.21
756	449863.84	2537733.21
757	449865.84	2537733.21
754	449865.84	2537735.21
758	449867.76	2537730.98
759	449869.76	2537730.98
760	449869.76	2537732.98
761	449867.76	2537732.98
758	449867.76	2537730.98
762	449869.49	2537736.11
763	449869.49	2537734.11
764	449871.49	2537734.11
765	449871.49	2537736.11
762	449869.49	2537736.11

766	449892.83	2537737.33
767	449892.83	2537735.33
768	449894.83	2537735.33
769	449894.83	2537737.33
766	449892.83	2537737.33
770	449896.64	2537742.04
771	449894.64	2537742.04
772	449894.64	2537740.04
773	449896.64	2537740.04
770	449896.64	2537742.04
774	449895.05	2537735.72
775	449897.05	2537735.72
776	449897.05	2537737.72
777	449895.05	2537737.72
774	449895.05	2537735.72
778	449903.26	2537768.77
779	449903.26	2537770.77
780	449901.26	2537770.77
781	449901.26	2537768.77
778	449903.26	2537768.77
782	449904.07	2537766.80
783	449902.07	2537766.80
784	449902.07	2537764.80
785	449904.07	2537764.80
782	449904.07	2537766.80
786	449905.07	2537770.92
787	449905.07	2537768.92
788	449905.85	2537768.92
789	449906.07	2537769.76
790	449907.07	2537769.17
791	449907.07	2537770.92
786	449905.07	2537770.92
792	449920.28	2537770.29
793	449922.28	2537770.29
794	449922.28	2537772.29
795	449920.28	2537772.29
792	449920.28	2537770.29
796	449923.33	2537773.94
797	449925.33	2537773.94
798	449925.33	2537775.94
799	449923.33	2537775.94
796	449923.33	2537773.94
800	449923.35	2537772.11
801	449923.35	2537770.11
802	449925.35	2537770.11
803	449925.35	2537772.11
800	449923.35	2537772.11
804	449923.36	2537784.03
805	449925.36	2537784.03
806	449925.36	2537786.03
807	449923.36	2537786.03
804	449923.36	2537784.03

808	449925.37	2537788.63
809	449923.37	2537788.63
810	449923.37	2537786.63
811	449925.37	2537786.63
808	449925.37	2537788.63
812	449367.63	2538268.84
813	449367.63	2538270.84
814	449365.63	2538270.84
815	449365.63	2538269.78
816	449366.83	2538268.85
812	449367.63	2538268.84
817	449579.13	2538101.24
818	449581.13	2538101.24
819	449581.13	2538103.24
820	449580.04	2538103.23
821	449579.74	2538102.81
822	449579.14	2538101.92
817	449579.13	2538101.24
823	449585.96	2538110.88
824	449587.96	2538110.88
825	449587.96	2538112.88
826	449586.82	2538112.88
827	449585.96	2538111.66
823	449585.96	2538110.88



Мащтаб 1: 3000



Масштаб 1: 3000

Условные обозначения:

- граница земельного участка, установленная в соответствии с федеральным законодательством, включенная в ГКН
- граница образуемого земельного участка
- :123 - обозначение кадастрового номера исходного земельного участка
- :3V1 - обозначение образуемого земельного участка
- зона с особыми условиями использования территории